



15th Annual Midwest Neuropsychopharmacology Update

Hilton at Easton Town Center
Juniper Ballroom A & B
3900 Chagrin Drive
Columbus, Ohio

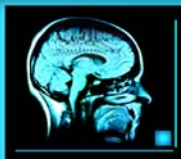
Friday, September 25, 2009
7:00 am - 8:15 am
Registration and Breakfast
8:15 am - 5:00 pm
Presentations

Featuring Sessions on:

- Update in Pediatric Psychiatry
- Update in Geriatric Pharmacotherapy
- Pharmacogenomics
- Atypical verses Typical Antipsychotic Debate
- Cognition and Neuroprotection in Schizophrenia

This activity is partially supported by educational grants from: AstraZeneca, Bristol-Meyers Squibb, and Eli Lilly and Company

Presented by
Creative Educational Concepts, Inc.



ABOUT THE UPDATE

The Midwest Neuropsychopharmacology Update provides the opportunity for attendees to interact with regional and national experts on topics of interest in the care of patients with psychiatric and neurologic disorders. The conference is held each year in a city in the Midwest. The Update is a regional meeting of the College of Psychiatric and Neurologic Pharmacists, an organization dedicated to the promotion of rational pharmacotherapy and care for patients with brain disorders.

Target Audience:

Designed for Pharmacists, Physicians, and Advanced Practice Nurses who are interested in the management of psychiatric and neurologic disorders.

Statement of Need:

The conference provides a variety of cutting edge topics that are related to recent clinical studies and current clinical controversies encountered by practicing psychiatric clinicians.

CONFERENCE FACULTY

<p>Shelia Botts, PharmD Clinical Assistant Professor University of Kentucky College of Pharmacy Lexington, Kentucky</p>	<p>Vicki Ellingrod, PharmD, BCPP Associate Professor College of Pharmacy and College of Medicine, Department of Psychiatry University of Michigan Ann Arbor, Michigan</p>
<p>Matthew Fuller, PharmD, BCPP, BCPS, FASHP Clinical Pharmacy Specialist Louis Stokes Cleveland VA Medical Center Cleveland, Ohio</p>	<p>Robert Kowatch, MD, PhD Director of the Pediatric Mood Disorders Program Cincinnati Children's Hospital Medical Center Cincinnati, Ohio</p>
<p>Melody Ryan, PharmD, MPH, BCPS, CGP Associate Professor Department of Pharmacy Practice and Science Department of Neurology University of Kentucky College of Medicine and College of Pharmacy Clinical Pharmacy Specialist Lexington VA Medical Center Lexington, Kentucky</p>	<p>Roger Sommi, PharmD, FCCP, BCPP Professor of Pharmacy Practice and Psychiatry Schools of Pharmacy and Medicine University of Missouri – Kansas City Research Director Psychopharmacy Research and Education Program Department of Pharmacy Western Missouri Mental Health Center Kansas City, Missouri</p>

CONTINUING EDUCATION

ACCME (Physicians)



This activity has been planned and implemented in accordance with the Essential Areas and Policies of the Accreditation Council for Continuing Medical Education through the joint sponsorship of Creative Educational Concepts, Inc. (CEC), and CPNP. CEC is accredited by the ACCME to provide continuing medical education for physicians.

CEC designates this educational activity for a maximum of 6.5 *AMA PRA Category 1 Credits™*. Physicians should only claim credit commensurate with the extent of their participation in the activity.

Statements of credit will be issued within 30 business days to those participants attending the activity and completing a CE request form.

ACPE (Pharmacists)



Creative Educational Concepts, Inc. (CEC) is accredited by the Accreditation Council for Pharmacy Education as a provider of continuing pharmacy education. This activity has been assigned ACPE number 245-999-09-032-L01-P and will award 6.5 contact hours (0.65 CEUs) of continuing pharmacy education credit. CEC complies with the Criteria for Quality for continuing education programming.

CONFERENCE SCHEDULE and OBJECTIVES

Friday, September 25, 2009

7:00 AM **Registration and Continental Breakfast**

8:15 AM **Welcome and Introduction**
Christopher Thomas, PharmD, BCPP, BCPS, CGP, FASCP

8:30 AM ***Update in Pediatric Psychiatry and Pediatric Bipolar Disorder***
Robert Kowatch, MD, PhD

- Compare signs and symptoms of bipolar disorder in pediatrics versus an adult population
- Assess treatment strategies for the treatment of bipolar disorder in pediatrics
- Appraise emerging therapy for the treatment of ADHD and autism

9:30 AM **Break – exhibits open**

10:00 AM ***Update in Geriatric Pharmacotherapy: Parkinson's Disease and Dementia***
Melody Ryan, PharmD, MPH, BCPS, CGP

- Evaluate the advantages and disadvantages of new medications and dosage forms for Parkinson disease treatment
- Describe the place of new medications and dosage forms in a Parkinson disease treatment regimen for a specific patient
- Explore treatment strategies regarding dose reduction guidelines, and the potential impact in optimally treating depression, anxiety, and dementia in the long term care facility

11:00 AM ***Pharmacogenomics and Integration into Clinical Practice***
Vicki Ellingrod, PharmD, BCPP

- Explore the impact of direct to consumer laboratories and the potential impact on pharmacogenomics
- Assess the FDA's position on pharmacogenomics testing and the implications on routine clinical practice

12:00 PM **Lunch –Exhibits Open**

1:15 PM ***Cognition and Neuroprotection in Schizophrenia***
Shelia Botts, PharmD, BCPP

- Evaluate the evidence that supports neurodegeneration in schizophrenia
- Assess the potential for neuroprotection in schizophrenia
- Compare newly developing pharmacologic and psychosocial interventions for treating schizophrenia

2:45 PM **Break – Exhibits Open**

3:15 PM ***Royal Rumble: Atypical versus Typical Antipsychotic Debate***
Matthew Fuller, PharmD, BCPP, BCPS, FASHP and Roger Sommi, PharmD, FCCP, BCPP

- Evaluate the differences between the two drug classes regarding various clinical issues including: improvements in positive and negative symptoms, effects on cognition, adherence and relapse rates, cardiovascular risk factors, utilization in dementia, and pharmacoconomics
- Relate the clinical issues between the two drug classes and the implications on formulary decisions for the future

4:45 PM **Closing Comments**

5:00 PM **Adjournment**

REGISTRATION FORM
15TH ANNUAL MIDWEST NEUROPSYCHOPHARMACOLOGY UPDATE
Friday, September 25, 2009

(If mailed, please retain a copy for your files)

Name		Degree	
Affiliation			
Address			
City		State	Zip
Phone		Fax	
E-mail			

- \$100 – Pre-Registration Fee (by Monday, September 14, 2009 at 5:00 pm EST)
 \$125 – Late Registration/Onsite Registration (after 5:00 pm on Monday, September 14, 2009)

Registration includes conference related material, CME/CPE credit, continental breakfast, lunch, and two breaks.

Please make checks payable to Creative Educational Concepts, Inc.

Office use only:

Check # _____ Amount \$ _____

Late/Onsite Registration: Deadline for pre-registration is Monday, September 14, 2009. After this date, registrations will be accepted on a space available basis for a fee of \$125.00.

Cancellation and Refund Policy: Refunds will be given for cancellations made via phone (859-260-1717) no later than Friday, September 18, 2009, minus a \$25 administrative fee. Fees for registrations cancelled after 5:00 PM EST on September 18, 2009, are nonrefundable.

PAYMENT

Payment in full must accompany your registration.

To register, please mail your registration form with payment to:

Creative Educational Concepts, Inc.

Attn: Lucia Denton

116 Dennis Drive

Lexington, KY 40503

Fax: (859) 276-6118 (Payment can be mailed to address above)

Phone: (859) 260-1717 (Payment can be mailed to address above)

Confirmations will be mailed or emailed within 5 business days after receipt of registration form and payment. If you do not receive confirmation within 2 weeks, contact us at pcalvert@ceconcepts.net or by telephone at (859) 260-1717.

It is the policy of Creative Educational Concepts, Inc. to comply with the Americans with Disabilities Act. If any participant of this activity has a disability that requires special accommodations, please call (859) 260-1717 at least one week prior to the conference.

CONFERENCE SUPPORT

This activity is partially supported by educational grants from:
AstraZeneca, Bristol Myers Squibb, and Eli Lilly and Company

HOTEL INFORMATION

The Hilton Columbus at Easton Town Center
3900 Chagrin Drive
Columbus, Ohio 43219

A block of rooms has been reserved for conference participants at a special rate of \$169 per night for Thursday, September 24th. To make your reservations, contact the hotel directly at or 614-414-5000 and ask for the group rate for the 15th Annual Midwest Neuropsychopharmacology Update. **Reservations must be made by September 3rd, 2009 in order to receive this special rate.**