

***PREVALENCE OF  
INACCURATELY LABELED  
PSYCHOTROPIC ALLERGIES  
WITHIN A STATE  
PSYCHIATRIC FACILITY***

Presented by

Michele McCue Pharm.D. Candidate

# Background

- Adverse reactions to psychotropic medications are commonly documented under allergy sections of medical records
- The prevalence of true drug allergies for these medications remains unclear
- Currently, limited research exists focusing specifically on psychotropic drug allergies

# Objectives

- To determine the prevalence of documented allergies to psychotropic medications
- To determine the prevalence of inaccurately labeled allergies to this common class of agents

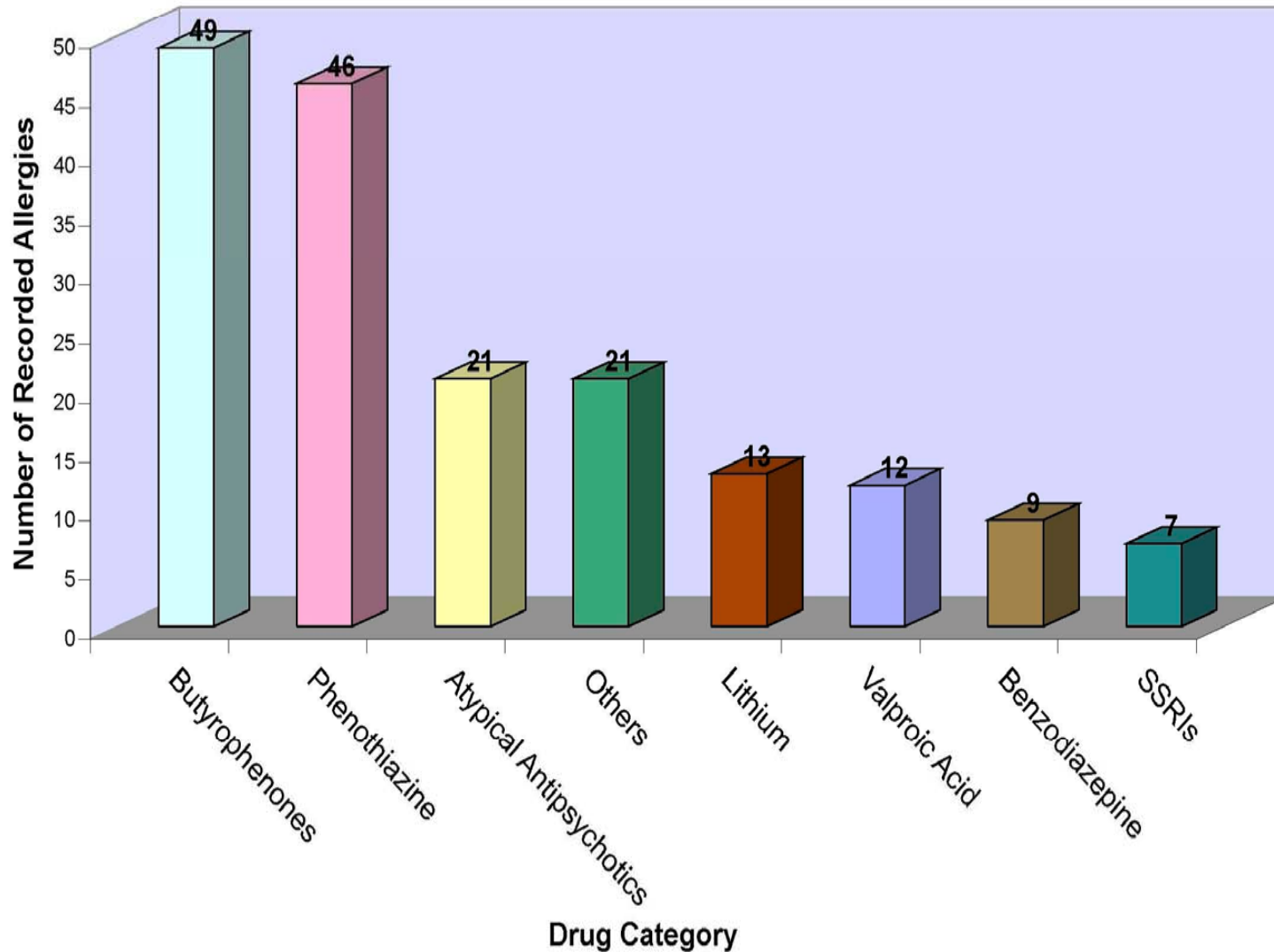
# Methods

- Utilized the pharmacy database to audit all documented allergies
- Interviewed a sample population (~20%) of patients with documented psychotropic drug allergies
- Consulted attending psychiatrists and reviewed medical records

# Results

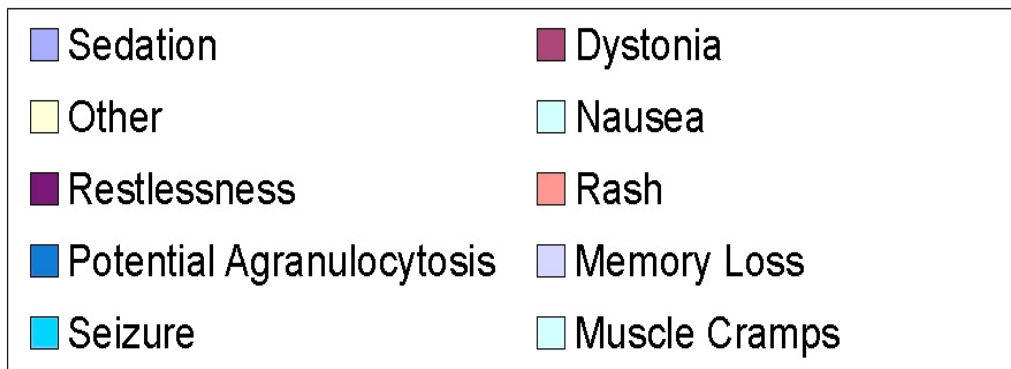
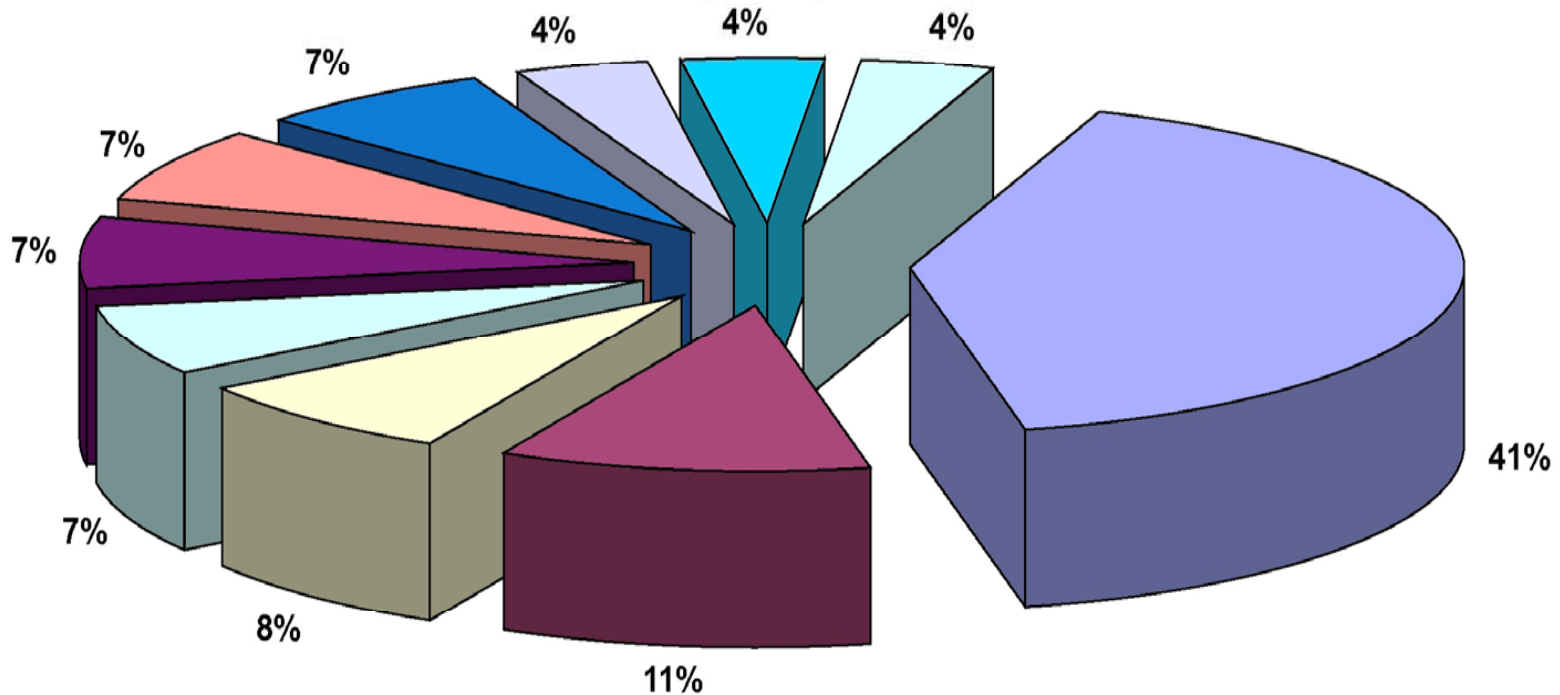
- 1,315 patients were reviewed
- 134 patients (~10%) had listed drug allergies to psychotropics
- 178 individual drug allergy incidents
- 93% of sample population actually reported an Adverse Drug Reaction
- 7% of sample population reported a non-specific dermatitis

**Figure 1: Prevalence of Documented Psychotropic Allergies  
by Drug Category within a 1,315 Patient Population Base  
(N=178)**



**Figure 2: Specific Type of Reaction Associated with Documented Drug Allergies Determined by Patient Interview**

**(N=27)**



# Conclusions

- Most, if not all, 'allergies' to psychotropic medications were mislabeled
- 'Allergy' to Butyrophenones was the most prevalent
- The most commonly described 'allergic reaction' was sedation
- Clozapine was the most commonly reported atypical antipsychotic with decreased WBC as the 'allergy'

# Conclusions

- Reactions such as sedation should be documented as an ADR
- Reactions determined to be dystonias should be reported as EPS and handled differently from an allergy
- Medical charts lacked complete allergy assessment information

# Research Opportunities

- Assess/development of protocols for patient allergy assessment and documentation at time of new patient interview and when a reaction occurs
- Determine the dosages at which these ADRs are occurring to further investigate why the patient has the negative experience

# Summary

- ~10% of the patient population had documented allergies to psychotropic medications
- 93%-100% of the sample population actually had some form of an ADR, not a true allergy
- Adjusting protocols for appropriate allergy assessment and documentation would be beneficial to the care of the patient

